

LA KALI SCHUSTER ENTERPRISES
Casper Wyoming.
Tel: 307 215 1121 info@affordableboxablehomes.

affordableboxablehomes.com

Main Products



40FT expansion container house

CV-240002

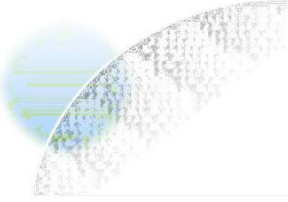




F700-20FT narrow version expandable

20FT expansion container
house

folding container house



Main Products



➤ 20FT Folding Container House



➤ Double decker expansion container house

Corrugated steel plate 20FT
folding container house



05

French window expand
container houses





20FT/40FT expansion of container house





Vast





Specification

*Expanded Dimensions(L*W*H)*

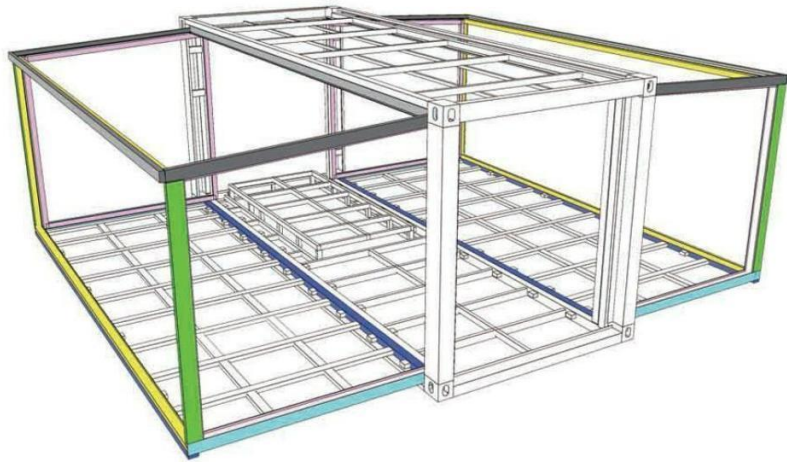
*Internal Dimensions(L*W*H)*

*Folded Dimensions(L*W*H)*

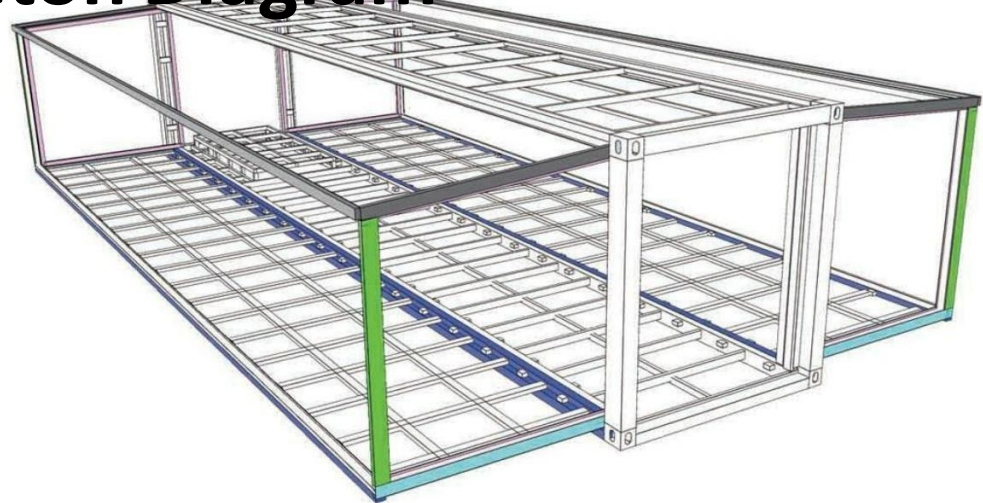


20FT	L5900*W6300*H2480	L5460*W6140*H2240	L5900*W2200*H2480
40FT	L11800*W6220*H2480	L11540*W6060*H2240	L11800*W2200*H2480

Product Skeleton Diagram



20 FEET EXPANDABLE FOLDING CONTAINER HOUSE



40 FEET EXPANDABLE FOLDING CONTAINER HOUSE

20 feet expandable folding container house configuration parameters

Basic feature	Product model	20 feet	House type	One Hall
	Expanded size	L5900*W6300*H2480	Number of people accommodated	2-4 people
	Internal dimensions	L5460*W6140*H2240	Power consumption	12KW
	Folded Size	L5900*W2200*H2480	Total net weight	8.1 tons
	Floor area	37m ²		
Frame structure				
Name	Content	Specifications		
Main frame (fully galvanized)	Top side beam	80*100*2.5mm Square tube		
	Top beam	Bending parts 2.0mm		
	Bottom side beam	80*100*2.5mm Square tube		
	Bottom beam	Bending parts 2.0mm		
	Galvanized hanging head	Galvanized hanging head 210*150*160		
	Steel column	Bending parts 2.0mm		
Side frame (fully galvanized)	Top frame	40*80*1.5mm P-shaped tube		
		40*80*1.5mm Square tube		
	Bottom frame	60*80*2.0mm Square tube		
	Folding hinge	130mm Galvanized hinge		
Overall framework protective coating	Spray	Electrostatic spray molding/straight white plastic powder		
Roof	External top plate	T50mm EPS color steel plate+corrugated veneer t0.4mm		
	Internal ceiling panels	200 type ceiling panel		
Wallboard	Side walls, front and rear	T65mm EPS color steel plate		
	Inner partition board	T50mm EPS color steel plate		
Ground	Center floor	18mm thick fireproof cement fiber floor		
	Floor on both sides	Bamboo plywood 18mm thick		
Doors and windows	Plastic steel sliding window	920*920mm		
	Steel single door	840*2030mm		
Electrical system	Circuit breaker system	One 32A leakage protector. Voltage 220V, 50HZ		
	Light	Bull 30*30 flat lamp, large ceiling lamp		
	Socket	Standard international three hole and five hole sockets (socket standards can be configured according to customer requirements)		
	Light Switch	Double open, single key switch (switch standard can be configured according to customer requirements)		
	Wiring	Incoming Line 6 ² , Air conditioning socket 4 ² , Ordinary socket 2.5 ² , Lighting 1.5 ² . (Circuit that meets certification requirements can be customized according to the country)		
Loading Quantity	1 40HQ shipping container can hold 2 sets.			

40 feet expandable folding container house configuration parameters

Basic feature	Product model	40 feet	House type	One Hall
	Expanded size	L11800*W6220*H2480	Number of people accommodated	3-6人
	Internal dimensions	L11540*W6060*H2240	Power consumption	12KW
	Folded Size	L11800*W2200*H2480	Total net weight	4.6 tons
	Floor area	72m ²		
Frame structure				
Name	Content	Specifications		
Main frame (fully galvanized)	Top side beam	80*140*3.0mm square tube		
	Top beam	Bending parts 2.5mm		
	Bottom side beam	80*140*3.0mm square tube		
	Bottom beam	Bending parts 2.5mm		
	Galvanized hanging head	Galvanized hanging head 210*150*160		
	Steel column	Bending parts 2.5mm		
Side frame (fully galvanized)	Top frame	40*80*1.8mm P-shaped tube		
		40*80*1.8mm Square tube		
	Bottom frame	60*80*2.5mm Square tube		
	Folding hinge	130mm Galvanized hinge		
Overall framework protective coating	Spray	Electrostatic spray molding/straight white plastic powder		
Roof	External top plate	T50mm EPS color steel plate+corrugated veneer t0.4mm		
	Internal ceiling panels	200 type ceiling panel		
Wallboard	Side walls, front and rear	t65mm EPS color steel plate		
	Inner partition board	t50mm EPS color steel plate		
Ground	Center floor	18mm thick fireproof cement fiber floor		
	Floor on both sides	Bamboo plywood 18mm thick		
Doors and windows	Plastic steel sliding window	920*920mm		
	Steel single door	840*2030mm		
Electrical system	Circuit breaker system	One 32A leakage protector. Voltage 220V, 50HZ		
	Light	Bull 30*30 flat lamp, large ceiling lamp		
	Socket	Standard international three hole and five hole sockets (socket standards can be configured according to customer requirements)		
	Light Switch	Double open, single key switch (switch standard can be configured according to customer requirements)		
	Wiring	Incoming Line 6 ² , Air conditioning socket 4 ² , Ordinary socket 2.5 ² , Lighting 1.5 ² . (Circuit that meets certification requirements can be customized according to the country)		
Accessory	Including top corner line, skirting line, corner wrapping, waterproof tape, sling, structural adhesive, and glue gun			
Loading Quantity	1 40HQ shipping container can hold 1 sets.			

Product Parameters



Product Layout



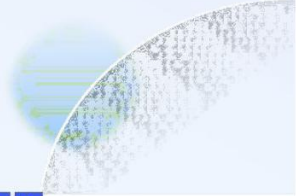
20 FEET, 1 BEDROOM, 2 LIVING ROOMS
20 FEET, 2 BEDROOMS, 2 LIVING ROOMS



40 FEET, 2 BEDROOMS, 2 LIVING ROOMS



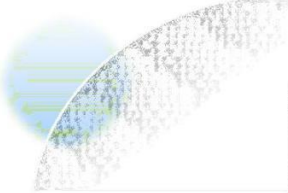
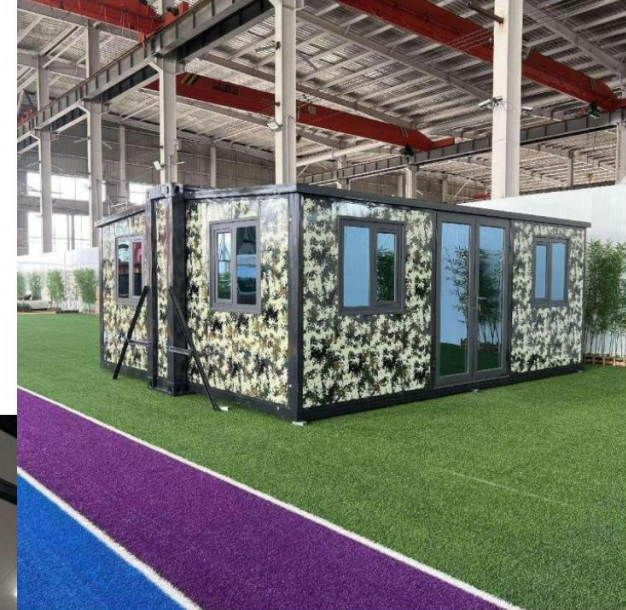
40 FEET
3 BEDROOMS
2 LIVING ROOMS



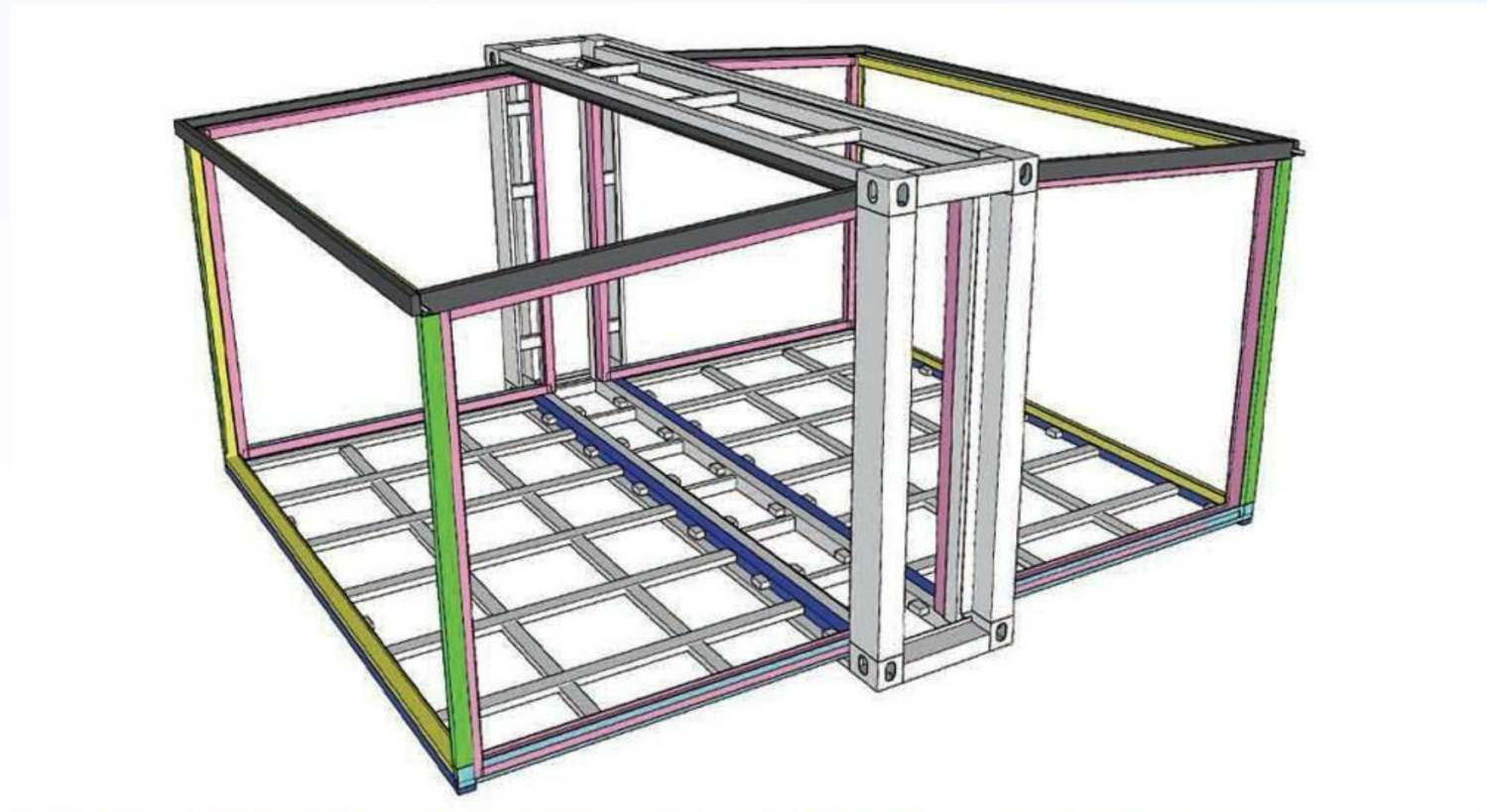


Product Introduction--F700-20FT narrow version expandable folding container house

The expandable folding container has a unique appearance and spatial layout. The expandable folding structure increases the available space inside the house, creating a larger living space. It can be quickly assembled and disassembled, with a folding width of only 0.7m, making it easy to move to different places. Whether it's outdoor adventure, camping, or home emergency rescue, the folding container house can provide convenient living solutions. Moreover, the occupies a smaller area, with 3 units per 20FT container and 6 units per 40HQ container, which further saves transportation costs.



Product Skeleton Diagram



se

Internal Decoration of the Product

Product Parameters



20FT narrow version expandable folding container house



Product model	Little 20 feet	House type	One Hall
---------------	----------------	------------	----------

Side frame (fully galvanized)	Top frame	40*80*1.5mm square tube
	Bottom frame	60*80*2.0mm square tube
	Folding hinge	130mm galvanized hinge
Overall framework protective coating	Spray	Electrostatic spray molding/straight white plastic powder
Roof	External top plate	T50mm EPS color steel plate+corrugated veneer t0.4mm
	Internal ceiling panels	200 type ceiling panel
Wallboard	Side walls, front and rear	T65mm EPS color steel plate
	Inner partition board	T50mm EPS color steel plate
Ground	Center floor	18mm thick fireproof cement fiber floor
	Floor on both sides	Bamboo plywood 18mm thick
Doors and windows	Plastic steel sliding window	920*920mm
	Steel single door	840*2030mm
Electrical system	Circuit breaker system	One 32A leakage protector, Voltage 220V, 50HZ
	Light	Bull 30 * 30 flat lamp, large ceiling lamp
	Socket	Standard international three hole and five hole sockets (socket standards can be configured according to customer requirements)
	Light Switch	Double open, single key switch (switch standard can be configured according to customer requirements)
	Wiring	Incoming Line 6 ² , Air conditioning socket 4 ² , Ordinary socket 2.5 ² , Lighting 1.5 ² , (Circuit that meets certification requirements can be customized according to the country)
Loading Quantity	1 40HQ shipping container can hold 6 sets.	

ONE BECROOM, TWO LVING ROOMS TWO BEDROOMS, TWO LIVING ROOMS





**TWO BEDROOMS, TWO
LIVING ROOMS MASTER
BEDROOM TWO
BEDROOMS, TWO LIVING
ROOMS SIDE BEDROOM**



20FT Folding Container House

Folding flat container houses are sturdy and durable, with a sturdy outer shell that is resistant to earthquake and deformation, and has good sealing properties. They can also be assembled to expand usage space, such as conference rooms, dormitories, kitchens, bathrooms, etc. They are easy to disassemble and have superior performance, stable and sturdy performance, good shock resistance, waterproof, fireproof, and corrosion-resistant weight.



Product Introduction

It can be used for medical disaster relief, military barracks, post earthquake resettlement, highways, railways, buildings, wind power, optoelectronics, oil exploration, emergency response of dangerous buildings, etc. Quick and convenient disassembly and assembly, no need for professional construction teams, no construction waste, shortening disassembly and assembly time, no damage for secondary utilization, saving transportation and disassembly costs, beautiful, durable, low-carbon, green, and environmentally friendly.



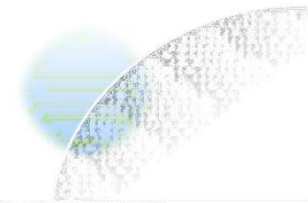
FOLDING PROCESS



Product Parameters

Folding Container House Configuration Parameters

Basic feature	External dimensions (mm)	5800 length*2440 width*2500 height
	Internal dimensions (mm)	5640 length*2320 width*2400 height
	Folding state (mm)	5800 length*2480 width*410 height
	Total mass (kg)	1200
Frame structure	Top main beam	Q235B P-shaped square tube 60×80×1.3mm
	Bottom main beam	Q235B Rectangular square tube 60×140×1.3mm
	Front and rear main beams	Q235B Irregular square tube 60×80×1.2mm
	Side wall frame	Q235B P-shaped square tube 40×80×1.2mm
	Bottom load-bearing capacity	Q235B Rectangular square tube 40×40×1.2mm
	Top load-bearing capacity	Q235B Rectangular square tube 40×40×1.2mm
	Hanging head	Q235B 125*200*4mm
Roof	Center floor	Galvanized hinge 13mm
	Overall framework protective coating	Electrostatic spraying/high gloss white
	External top plate	Corrugated board 0.4mm
Wallboard	Internal ceiling	Color steel veneer V831*0.25mm
	Insulated glass wool	Fiberglass cotton roll 50mm (bulk density 16 kg)
	Sidewall	50mm composite board 0.23mm +basalt rock wool (bulk weight 50 kg)+-0.1mm
Floor	Front and rear wall	65mm composite board 0.23mm +basalt rock wool (bulk weight 50 kg)+-0.1mm
		Fireproof glass magnesium floor 15mm
Electrical system	Electrical wiring must be installed strictly in accordance with moisture-proof regulations, and all electrical products must comply with CE certification. Connect the circuit according to the circuit engineering specifications, indoor: incoming line 4 ² National standard soft copper wire, 1 20A circuit breaker, socket inlet 2.5 ² , One five hole single opening socket, one air conditioning socket, and one long LED light	
Ordinary anti-theft door	High quality anti-theft door (warm white) Size: 970mm * 970mm	
Window	930 * 930 plastic steel anti-theft integrated window, glass thickness 4mm (warm white)	
Quality assurance	The entire house meets the A-level fire protection standard.	



customer showcase



